

Collaborate Innovate Succeed

Propel - **Project Management Consultancy Company** rendering professional services in project management right from inception to close out of projects. Our solutions encompass the entire range of services for integrated project management, feasibility, planning, execution, monitoring & control and close out over wide range of sectors.

Contact us:

116 A, 2nd floor, Periyarpathai, Choolaimedu (W),
Chennai – 600094
Ph: 044 65157215,
Mob: +91 – 9677000499
Email:contact@propelpmc.com



Propel
Project Management Consultants Pvt Ltd



“Quality is always doing right things when no one is watching”



Propel
Project Management Consultants Pvt Ltd

www.propelpmc.com

PERSPECTIVES

We are a Project Management Consulting Company.

We render professional services in project management right from inception to close out of projects.

Our solutions encompass the entire range of services for integrated project management, feasibility evaluation, planning, execution, monitoring & control and close out over wide range of sectors.

We have the capability to cover all components of project, business, engineering, R&D, operations & maintenance, procurement, and construction.

We have developed an integrated project management methodology to deliver the projects within the Scope, Schedule, Cost and Quality.

We realize that all the projects from conceptualization to commercial operation require a sound project management. We have the capability of assisting in project management in various atmospheres to convert the basic ideas into reality.

We are duty bound to give our clients our knowledge, time, commitment and confidentiality.

We believe that we are accountable for our conduct and behavior. We are ethical and transparent in all our operations and aggressively pursue our client's interests.

We realize that quality & safety is of utmost importance to any client. Accordingly, we take our work very seriously and put forth our best effort to deliver, meeting the client requirements.

For us quality means "Always doing right things, when no one is watching"

Our Vision

To be one of the top 10 Project Management consulting companies in India by 2015 adding values to ourselves, our clients and community.

Our Mission

Our Mission is to deliver projects with high quality and safety standards. We are committed to maintain excellence, integrity and high ethical values in all our operations. We build values by creating an atmosphere of collaboration, innovation, optimism, teamwork, creativity with every employee and stakeholder.

Quality Policy

Quality Statement

“Quality is always doing right things, when no one is watching”

Quality Commitment

We believe that Quality is never a coincidence.

For us, quality means, providing the best possible solution out of available alternatives, may not be the perfect solution.

It is the result of:

- ✓ High Intention
- ✓ Sincere Effort
- ✓ Intelligent Direction
- ✓ Skillful Execution of Best Practices
- ✓ Thriving for Continuous Improvement
- ✓ Employing the best Human Resource

Safety Policy

Safety Statement

“Think Safety, because we love People & Environment”

Safety Commitment

We are committed to workplace Safety, Health & Environment for all the activities we involve in.

We believe that it's our responsibility to provide safe working environment to our employees, contractors, vendors, suppliers and other stakeholders.

We achieve this by employing strict safety measures, periodic assessment of workplace for hazards to prevent injuries, ill health and pollution.

Corporate Social Responsibility

Propel focus on embracing responsibility for our actions and encourage a positive impact through our activities on the environment, clients, employees, communities, stakeholders and all other members of the public sphere.

Work place

We focus on creating and maintaining an ethical workplace for our people by ensuring high level of integrity, moral values, and honesty to bring the best possible outcomes. We strive to create a collaborative, innovative, creative atmosphere encouraging individuals working together towards common goals and objectives.

Diversity

Diversity is the success of our business; we respect the values of different cultures, geographic locations in which we work. By bringing the dynamic mix of people and ideas we enrich our capabilities.

Community & Society

We strive for betterment of community and society wherever we live and work.

Business Ethics & Code of Conduct

We conduct our business with highest level of integrity, honesty and transparency with no tolerance to corruption, fraudulent practices, workplace harassment and violation of policies. We expect the same from our clients, supplier, vendors, contractors and our business counterparts.

Services

- ✓ Scope Management
- ✓ Schedule Management
- ✓ Cost Management
- ✓ Quality Management
- ✓ Risk Management
- ✓ Communication Management
- ✓ Human Resources Management
- ✓ Procurement Management
- ✓ Integration Management

Propel Project Management Methodology (PPM)



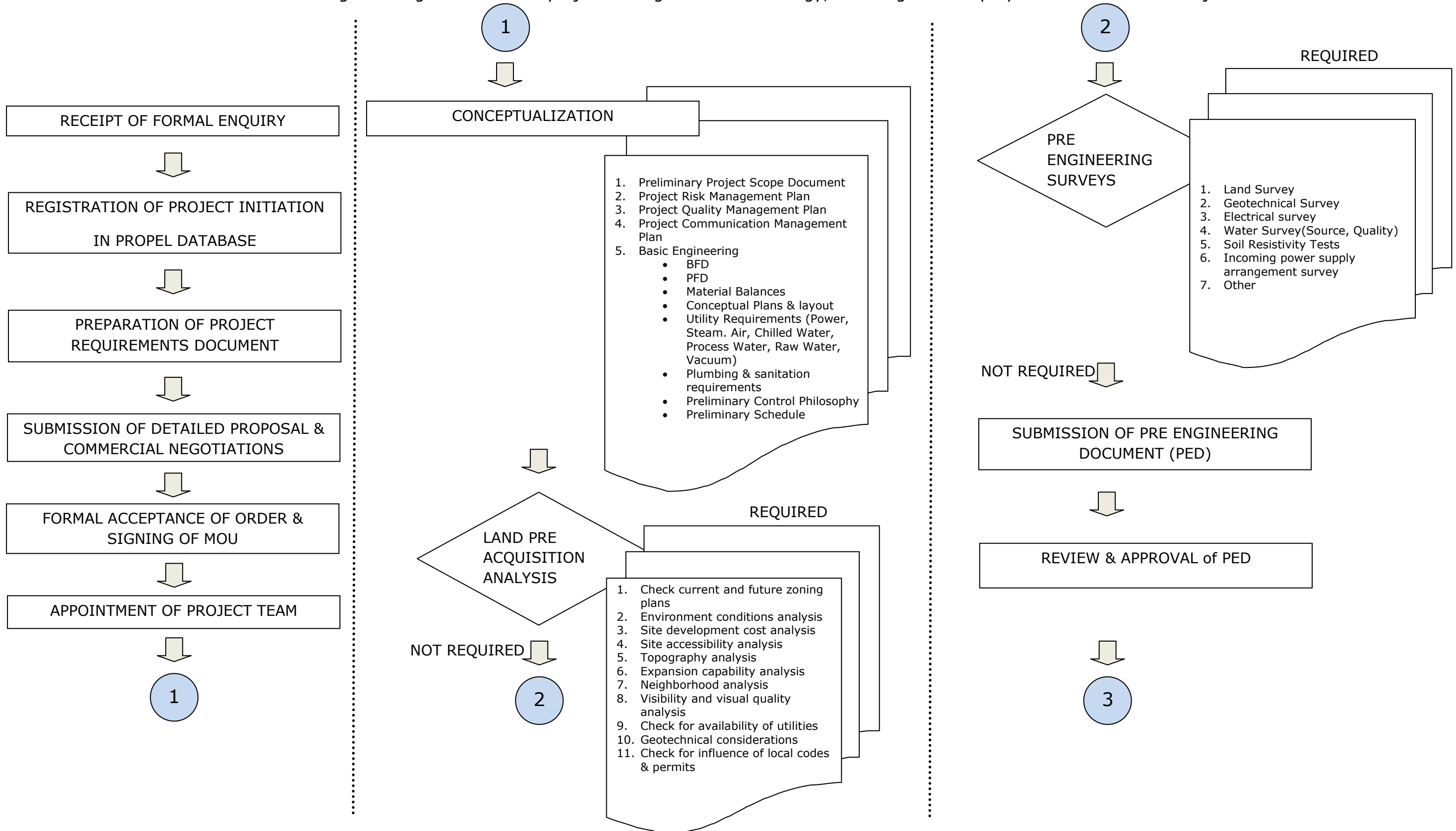
Brief Scope of Work from Each Phase

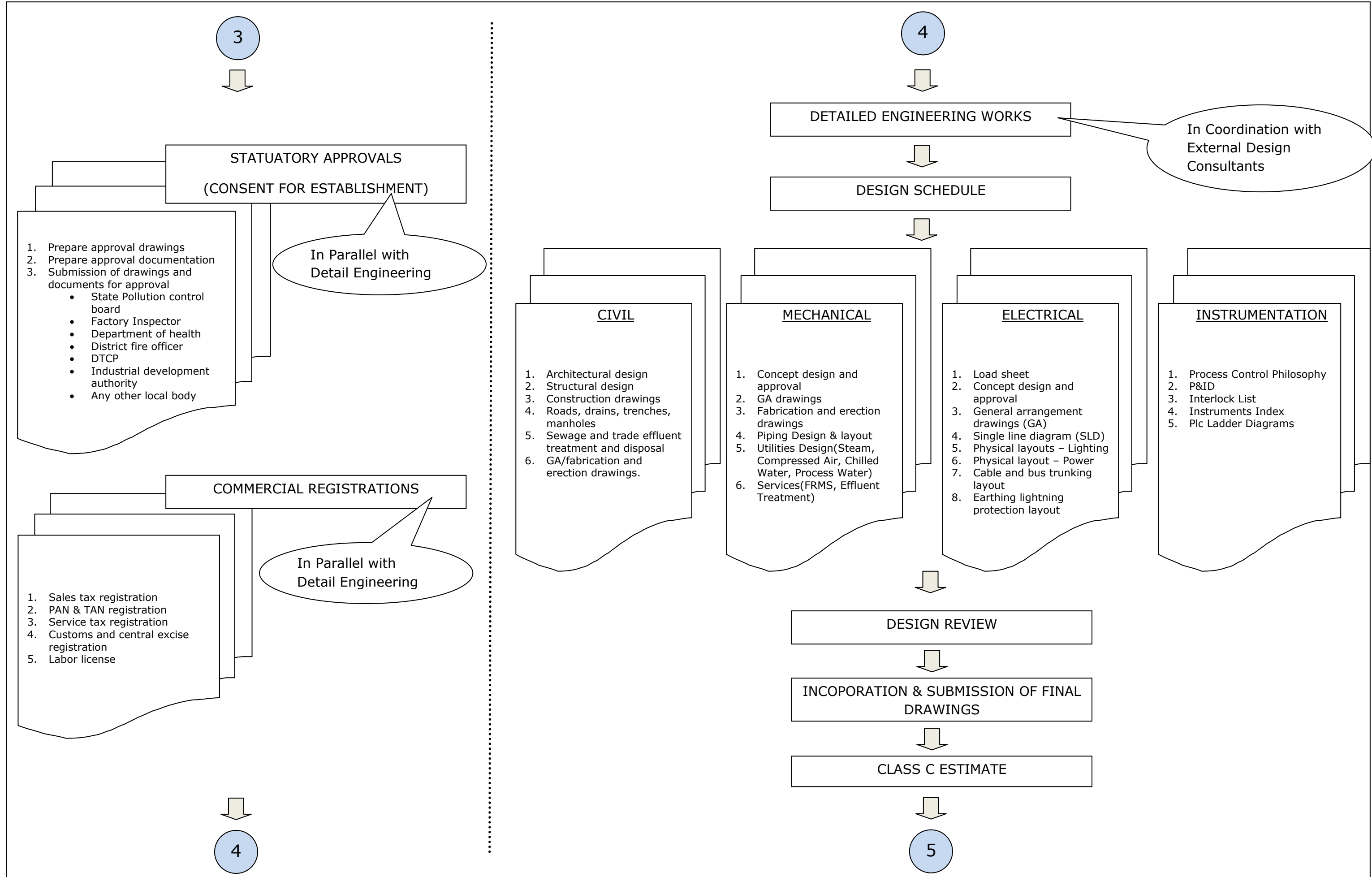
Concept	Development	Implementation	Validation	Handover	Closeout
Scope Document	Pre land Acquisition Analysis	Procurement Support	Scope	Commissioning Assistance	Lessons Learned
Risk Management plan	Surveys	Fabrication & Inspection	Design	Project Dossier	Opportunities for Improvement
Quality Plan	Detailed Design	Erection	Quality	Plant Dossier	Close Out Report
Communication Plan	Estimation- Budget, Time, Resources	Construction	Safety	Capitalization Asset Register	
Schedule Plan	Statutory drawings		Schedule		
Basic Engg Document	Implementation plan		Budget		



PROJECT PROCESS FLOW CHART

The below Flowchart gives a logical flow of our project management methodology, "Starting from Enquiry to Close Out of the Project"





5



PRELIMINARY PROJECT IMPLEMENTATION SCHEDULE



TENDERING & PROCUREMENT

1. Separate or comprehensive tender packages for
 - Civil works
 - Mechanical works
 - Electrical works
 - Voice and data transfer systems
 - Interior and exterior works and finishes
 - Landscaping
2. Receipt of tenders
3. Techno commercial evaluation
4. Preparation of technical recommendation document
5. Commercial negotiation
6. Finalization of contract.
7. Exchange of contract and statutory documentation
8. Submission of project planning and review documentation by contractor.
9. Handing over of all construction drawings to contractors
10. Site Mobilization by contractor
Project Block Estimates

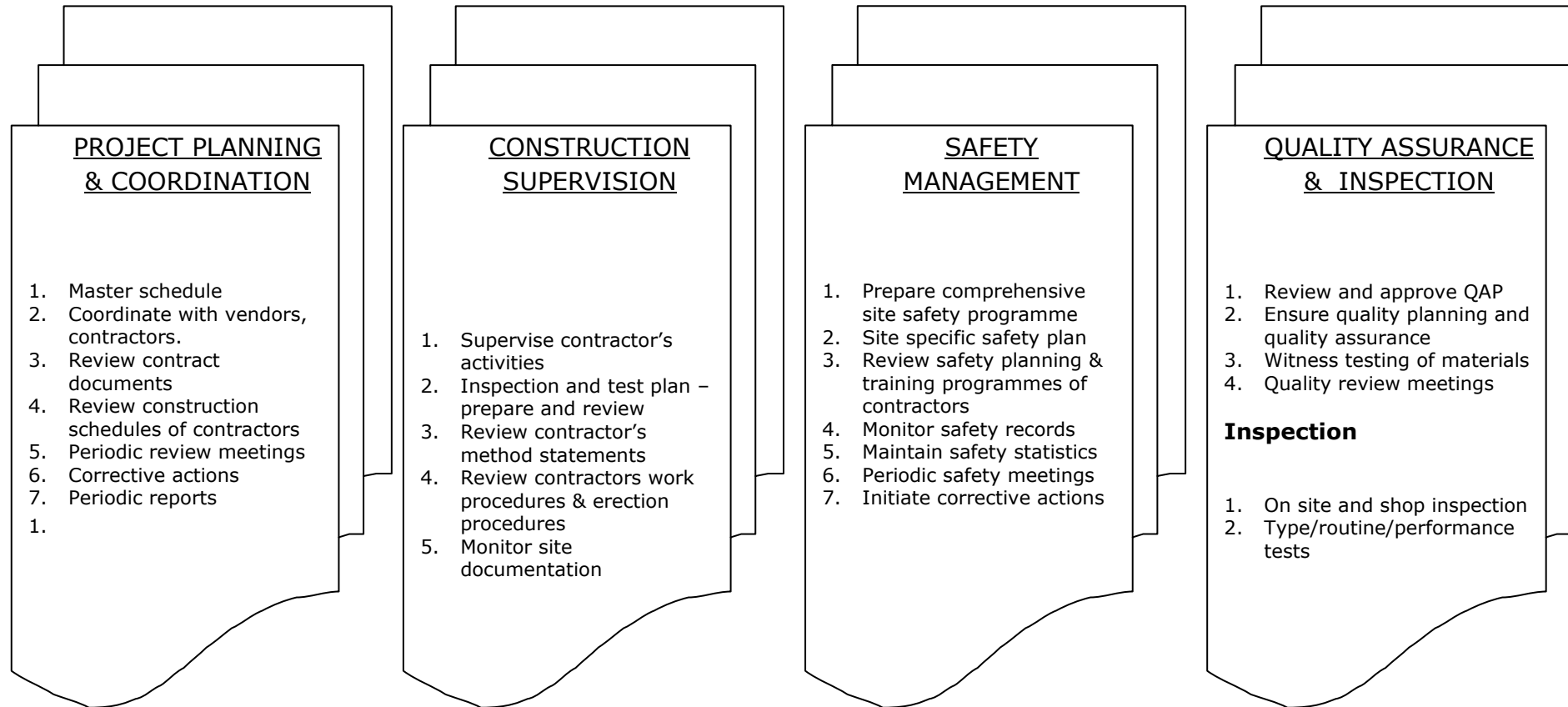


6

6



PROJECT & CONSTRUCTION MANAGEMENT



7

7

CONSTRUCTION PHASE

1. Construction work by contractor
2. Submission of shop drawings and working drawings by contractor and approval
3. Periodic project review
4. Construction phase competition
5. Apply for electrical power



CERTIFICATION OF BILLS

1. Review of measurements submitted by the contractor
2. Review of completed work.
3. Certifying progress payments as per contractual terms.
4. Fix rates for extra works and change orders.
5. Resolve scope changes and extra claims.
6. Final audit and certifying final payment to contractors



VALIDATION

1. Scope
2. Design
3. Quality
4. Safety
5. Schedule
6. Budget



8

8

COMMISSIONING

1. Check for completion of commissioning procedures, Operation and Maintenance Manuals
2. Dry Commissioning
3. Wet Commissioning
 - Witness checks & record all commissioning and performance tests.
 - Issue taking over final certificate and hand over of the facility.

HAND OVER

1. As Built Drawings
2. Project Dossiers
3. Plant Dossier
4. Capitalization Asset Register
5. Statutory Approvals – Consent for Operations
 - Prepare final approval drawings
 - Prepare final approval documentation
 - Submission of drawings and documents for approval
 - a) State Pollution control board
 - b) Factory Inspector
 - c) Department of health
 - d) District fire officer
 - e) DTCP
 - f) Industrial development authority
 - g) Any other local body



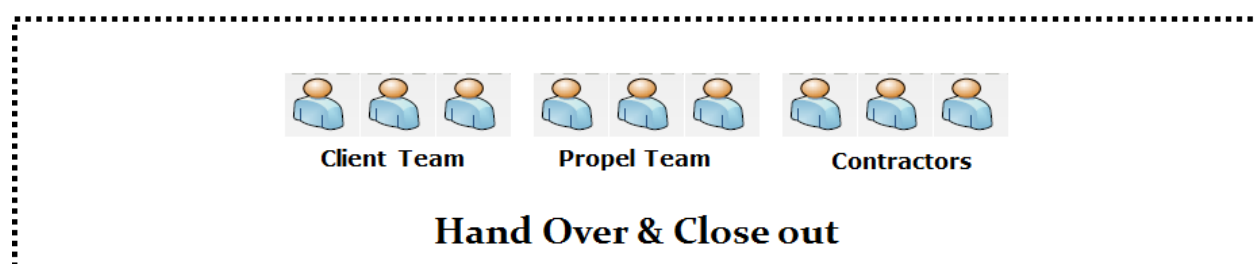
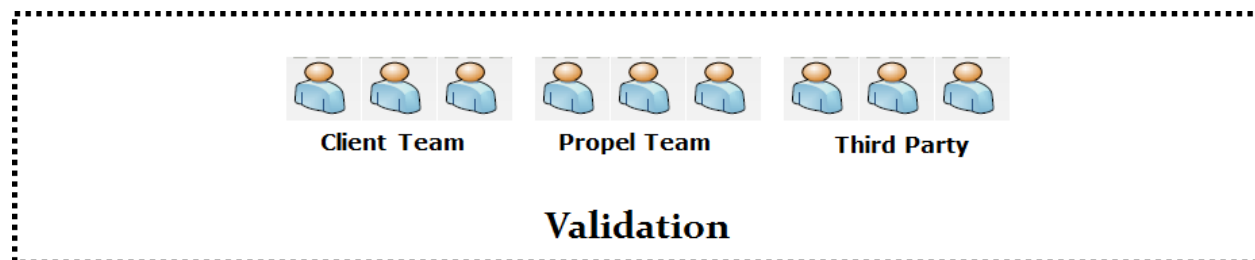
9

9

CLOSE OUT

1. Lessons Learnt
2. Opportunity for Improvement
3. Close Out Report

How We Operate



Ongoing Projects





Corporate Office

116/A, 2nd floor, Periyarpathai

Choolaimedu (West),

Chennai-600094.

Phone: 044-65157515

Email: contact@propelpmc.com

Website: www.propelpmc.com